



reimagining  
redwood

Redwood is grown and harvested in accordance with the highest environmental standards in the world. Roughly 90% of all industrial redwood timberlands are certified by the Forest Stewardship Council® (FSC®) or Sustainable Forestry Initiative® (SFI®). Many Northern California timberland owners are protecting old-growth trees, while nurturing the new growth of redwood. Humboldt Sawmill Company, LLC sources FSC certified logs from sister company, Humboldt Redwood Company, LLC, to run it's Scotia, California sawmill. The mill is chain-of-custody certified, meaning FSC certification is maintained for all products produced.



**Humboldt™**



The mark of  
responsible forestry

Redwood's natural beauty and performance characteristics make it ideal for a wide variety of exterior and interior building and design applications.

# Redwood:

## **Timbers**

Available in (nominal) 4" x 6" through 12" x 12" in lengths up to 24 feet. Special order timbers up to 18" x 24" x 24 feet. All grades available in rough green or surfaced four sides (S4S).

## **Decking**

Available in (nominal) 2" x 4" and 2" x 6" in lengths from 6–24 feet, surfaced four sides (S4S). Preferred grades include Heart B, Deck Heart, and B Grade.

## **Exterior Siding**

Available in (nominal) 1" and 2" material, depending on the pattern; 1" x 4" through 1" x 12" and 2" x 4" through 2" x 12". Both 1" and 2" patterns are available in lengths from 6–24 feet.

## **Interior Finishes**

Available in (nominal) 1" material. 1" x 4" through 1" x 12" in lengths from 6–10 feet.

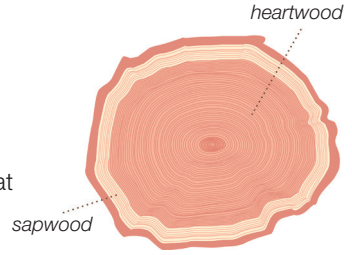
*We have many profiles in stock and the ability to grind our own knives to match existing patterns.*

## Durability

The natural tannins in redwood heartwood render it resistant to termites and decay. Extensive flame spread testing confirms redwood's superior performance under fire exposure (Class B flame spread).

## Redwood Grades

Redwood grades fall into two major categories — heartwood and sapwood. Heartwood comes from the center of the tree and has the warm red color that gives redwood its name. Sapwood comes from the outer areas of the tree.



## Redwood Grades and Uses

	Merchantable	Merchantable Heart	Construction Common	Construction Heart	B Grade	Heart B	Clear	Heart Clear
Architectural	—	—	—	—	■	■	■	■
Garden	■	■	■	■	—	—	—	—
Knots	■	■	■	■	■	■	—	—
Sapwood	■	—	■	—	■	—	■	—
Posts	—	—	—	■□	—	■	—	■
Beams	—	—	—	■□	—	■	—	■
Joists	—	—	—	■□	—	■	—	■
Decking	—	—	■□	■	■	■	■	■
Trellises	■□	■	■	■	■	■	■	■

■ Suitable grade for use □ Most economical grade for use

Notes: All grades are available in rough green or surfaced four sides (S4S). Redwood grades are established by the Redwood Inspection Service (RIS).

## Stability and Strength

Redwood outperforms other woods because it shrinks and swells less and therefore is less likely to warp, cup, and check. Redwood features shear strength up to 5 times greater than plastic-composite lumber.

## Minimal Maintenance

Redwood used in exterior applications will last 25–35 years with minimal maintenance, and more than 100 years for interior finishes. Weathered

redwood can be easily restored to its original appearance, or reused in other applications.

## Custom Orders

Humboldt Sawmill Company's Scotia, California sawmill can accommodate custom orders for distribution throughout the Western U.S. and beyond.

## Contact

Humboldt Sawmill sales at (707) 485-6735.

## Specification Resources

Standardized 3-part specifications, as well as BIM objects, are available at [www.arcacat.com](http://www.arcacat.com).



CAD drawings, product catalogs, and more are available at [www.caddetails.com](http://www.caddetails.com).





Redwood is a natural resource that is native to California, relying on the sun and fog on the North Coast as energy and water sources for its growth. Redwood has many natural attributes that make it a beautiful, strong and durable building material. With the restoration of redwood forestlands and advances in sustainable forest practices over the past few decades, redwood is again the preferred option for sustainability-minded designers. It's time to reimagine what you can do with redwood. Design responsibly.

